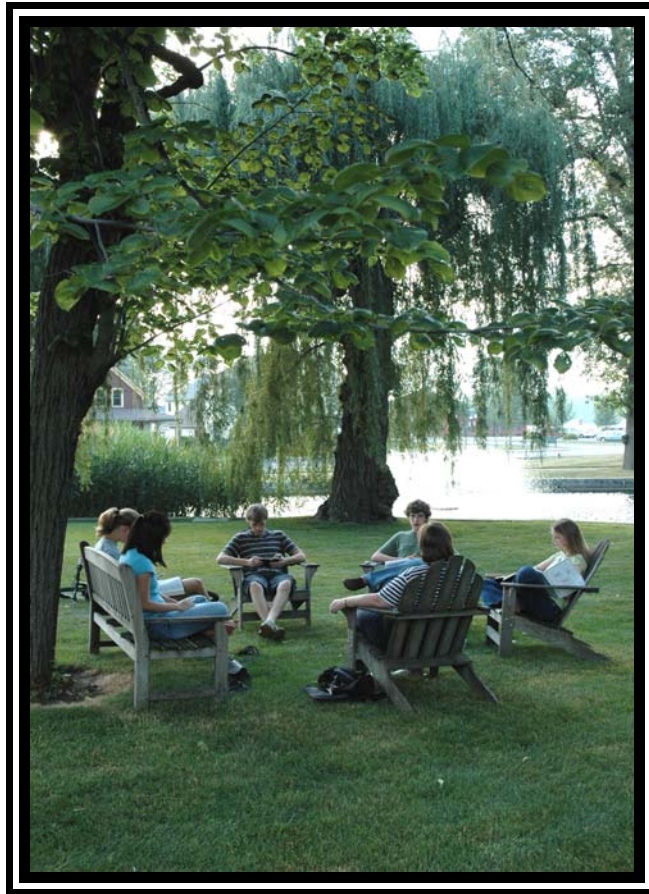


# Starting a Bible Study for Performing Artists



A Publication of the Christian Performing Artists' Fellowship  
© 2006

Dear Friends,

If you are reading this, you are probably interested in starting a Bible study in a performing arts organization – an orchestra, music school, youth symphony, dance troupe, theatre troupe, or opera company. This handbook has been created to assist you in that endeavor. The performing arts world is in dire need of people who will actively engage their faith with the culture.

May this handbook spur you on in “love and good deeds”. (Hebrews 10:24)

“With God’s power at work in us, He can do much, much more than anything we think or ask.” Ephesians 3:20

In His Grace,

Jennifer Jackson  
CPAF Bible Study Coordinator



# Table of Contents

<a href="#">Who is CPAF?.....</a>	<a href="#">4</a>
<a href="#">.....</a>	<a href="#">4</a>
<a href="#">What is a CPAF Bible Study?.....</a>	<a href="#">5</a>
<a href="#">Why Start a Bible Study?.....</a>	<a href="#">6</a>
<a href="#">How Do I Get Started?.....</a>	<a href="#">7</a>
<a href="#">What Resources Are Available?.....</a>	<a href="#">8</a>
<a href="#">Registration Forms.....</a>	<a href="#">9</a>
<a href="#">CPAF Bible Study Registration Form.....</a>	<a href="#">9</a>
<a href="#">Leadership Qualification Statement.....</a>	<a href="#">10</a>
<a href="#">The CPAF Statement of Faith.....</a>	<a href="#">11</a>

## Who is CPAF?

The Christian Performing Artists' Fellowship was begun in 1979 by a group of two dancers, two cellists, one composer, and the trombonist for the National Symphony Orchestra. It was begun with the goal of bringing the Gospel to the performing arts world. Together they began meeting to pray for revival, and out of that simple prayer group was birthed ASAPH, a Christian dance/orchestra ensemble that performed in many prestigious venues from the Kennedy Center to the Bolshoi Theatre in Moscow.

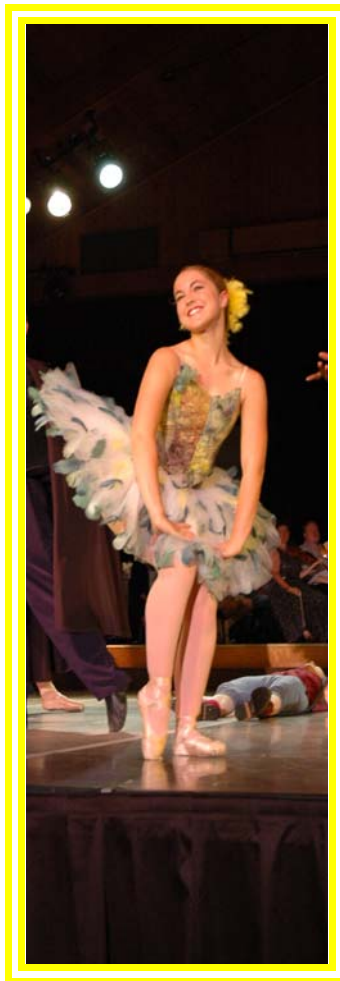
In 1997, CPAF began another arm of ministry to college and high school age artists to train up a generation of young people who would excel in artistry and love for the Lord. The MasterWorks Summer Festival began at Houghton College in 1997, and has since been transplanted to Winona Lake, Indiana.

CPAF's vision has always been the same: To bring the love of Christ to a relatively untouched mission field, the world of the performing arts. This includes performers, teachers, and audiences, as well as arts administrators. CPAF is organized as a trans-denominational ministry dedicated to spreading the Gospel of Jesus Christ and performing and teaching the classical arts to the glory of God.



## What is a CPAF Bible Study?

A CPAF Bible study is a Bible study aimed at performing artists. It is led by, and comprised of, performing artists. It seeks to bring the Word of God to the performing arts world. It is sponsored by CPAF through the Bible Study Ministry. Resources such as topical Bible studies on the arts and a monthly newsletter for leaders are available from the CPAF office. Registration forms are located in the back of this handbook.



## Why Start a Bible Study?

(1) To develop a deeper relationship with the Lord through involvement in His Word.

*"I have hidden Your Word in my heart  
that I might not sin against you."  
(Psalm 119:11)*

(2) To unite the body of Christ in performing arts organizations.

*"And let us consider how we may spur one another on toward love  
and good deeds. **Let us not give up meeting together**, as some are  
in the habit of doing, **but let us encourage one another** – and all the  
more as you see the Day approaching."  
(Hebrews 10:24-25)*

(3) To hold out the Word of life to the performing arts world.

*"...children of God without fault in a crooked and depraved  
generation, in which you shine like stars in the universe **as you hold  
out the Word of life...**"  
(Philippians 2:15-16)*



## How Do I Get Started?

- Contact the CPAF Bible Study Coordinator.

(574) 267-5973

[cpaf@christianperformingart.org](mailto:cpaf@christianperformingart.org)

[www.christianperformingart.org](http://www.christianperformingart.org)

The Bible Study Coordinator will pray with you, help you think through the process of starting a Bible study, and offer resources where applicable.

- Fill out the two registration forms located in the back of this handbook. Send them to:

CPAF Bible Study Ministry

P.O. Box 700

Winona Lake, IN 46590

- ✓ **Pray** – for guidance. *“Trust in the Lord with all your heart, and lean not on your own understanding. In all your ways acknowledge Him, and He will direct your paths.” (Proverbs 3:5-6)*
- ✓ **Partner** – with another Christian. *“Though one may be overpowered, two can defend themselves. A cord of three strands is not quickly broken.” (Ecclesiastes 4:12)*
- ✓ **Plan** – Who, what, when, where? *“Plans fail for lack of counsel, but with many advisers they succeed.” (Proverbs 15:22)*
- ✓ **Perform** – Set the study in motion. *“‘Follow Me,’ Jesus said to him, and Levi got up, left everything and followed Him.” (Luke 5:27-28)*



## What Resources Are Available?

Once you are a registered CPAF Bible study, you will be connected to the Bible Study Coordinator for prayer, support and advice. You will also be connected to other Bible study leaders internationally through a monthly newsletter and a Yahoo Group email list.

Training seminars, held every summer at the MasterWorks Festival, and spring leadership retreats offer opportunities for training and fellowship.

Series of topical Bible studies on the arts are available from CPAF for use in your Bible study. *The MasterClass* is a series of studies on topics related to performers, and *Images* is a series on the Biblical foundations of art.

To obtain copies of *The MasterClass* or *Images*, or for more information about any of these resources, please contact the CPAF office at (574) 267-5973, or [cpaf@christianperformingart.org](mailto:cpaf@christianperformingart.org)



# Registration Forms

## CPAF Bible Study Registration Form

(Return to: CPAF Bible Study Ministry; P.O. Box 700; Winona Lake, IN 46590)

The Christian Performing Artists' Fellowship Bible Study at \_\_\_\_\_ commits itself to studying the Bible in partnership with CPAF. We, the undersigned, verify this Bible study chapter will be:

- led by a committed Christian performing artist, for performing artists.
- based solely on the Bible as the inspired Word of God.
- in accord with the CPAF Statement of Faith.

We understand that if any of these commitments are broken at any time, we are no longer officially a CPAF study and CPAF will not take any responsibility for our actions or views.

Signed, \_\_\_\_\_

Date: \_\_\_\_\_

\*Co-Leader: \_\_\_\_\_

\*Faculty Sponsor: \_\_\_\_\_

(\*Recommended but not required for registration.)

## Leadership Qualification Statement

I, \_\_\_\_\_, have read and agree with the CPAF Statement of Faith. I pledge that I have received Jesus Christ as my Savior and Lord and am taking steps to grow in my relationship with Him through reading of His Word and involvement with a local church.

Signed, \_\_\_\_\_

Date: \_\_\_\_\_

### Contact Information

Email address: \_\_\_\_\_

Phone number: \_\_\_\_\_

Mailing address at  
school (if applicable):

\_\_\_\_\_  
\_\_\_\_\_  
\_\_\_\_\_  
\_\_\_\_\_  
\_\_\_\_\_  
\_\_\_\_\_

Permanent address:

\_\_\_\_\_  
\_\_\_\_\_  
\_\_\_\_\_  
\_\_\_\_\_  
\_\_\_\_\_

Instrument/voice type/art  
form: \_\_\_\_\_

Year in school (if  
applicable): \_\_\_\_\_

-

Academic major (if applicable): \_\_\_\_\_

Church currently attending: \_\_\_\_\_

## **The CPAF Statement of Faith**

The Christian Performing Artists' Fellowship (CPAF) is a registered non-profit, tax-exempt organization and ministry dedicated to performing classical performing arts (music, dance, and theatre) to the glory of God and to spreading the Gospel of Jesus Christ to the classical performing arts world. The MasterWorks Festival is a performing arts summer camp sponsored by CPAF. Dr. Patrick Kavanaugh is the Executive Director of CPAF and has authored a number of books including *The Spiritual Lives of the Great Composers* (Zondervan).

### *Vision for CPAF*

**To bring the love of Christ to a relatively untouched mission field: the many thousands involved in the world of the performing arts. This includes performers, teachers, and audiences, as well as arts administrators. CPAF is organized as a trans-denominational ministry.**

## **Statement of Faith**

### **SECTION A. Essential Biblical Doctrine**

1. We believe the Bible to be the inspired word of God (II Tim. 3:16). It is the only infallible standard for our lives, and its teachings must be the absolute authority of CPAF's ministry (Josh. 1:7-8).

2. We believe that there is one God, eternally existent in three persons: the Father, the Son, and the Holy Spirit (Mt. 28:19; Lk. 3:21-22).
3. We believe in the deity of our Lord Jesus Christ (Col. 2:9) - the Messiah (Jn. 4:25-26) whom God had promised to send for the salvation of all who believe (Lk. 4:21), in His virgin birth (Mt. 1:20-25), in His sinless life (Heb. 4:15), in His miracles (Jn. 15:24), in His atoning death on the cross (Col. 1:22), in His bodily resurrection (Lk. 24:46-48), in His ascension into heaven (Act. 1:9), and in His personal return which He has promised (Mt. 24:30-31).
4. We believe in the present ministry of the Holy Spirit (Jn. 14:26), enabling Christians to live godly lives (I Jn. 3:24), and convicting unbelievers of their need for Christ (Jn. 16:7-8).
5. We believe that man has rebelled against God (Isa. 53:6), and that all who are not born again through Jesus Christ are separated from God and in need of the Savior (Mt.7:13-14; Jn. 3:3).
6. We believe that salvation, eternal life, and reconciliation with God are found only in Jesus Christ (Jn. 5:24; Acts 4:12).
7. We believe that the Good News of salvation through Jesus Christ has been entrusted to men to proclaim to everyone (Mk. 16:15-16; Rom. 1:16)
8. We believe that there will one day be a judgment of all men (Mt. 25:31-32): those who are saved will receive eternal life with God (Jn. 3:16), and those who are lost will receive eternal punishment (Jn. 3:36).

#### **SECTION B.     Debatable Interpretations and Doctrines**

God has given CPAF the task of bringing together performing artists from many different denominational backgrounds. We recognize that argument over different interpretations of certain passages of Scripture would hinder the execution of

this fellowship. God has commanded us to avoid "passing judgment on disputable matters" (Rom. 14:1). We therefore have "agreed to disagree" upon a variety of controversial and debatable topics, so that we might be free to serve God together in the world of the performing arts.

